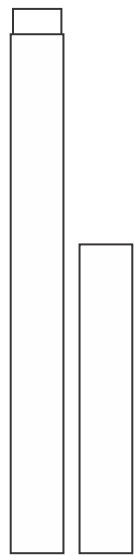
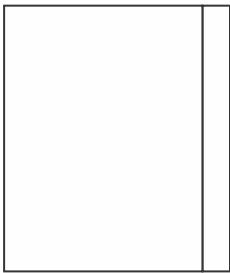


SPT011 HOC - ASSEMBLY INSTRUCTIONS

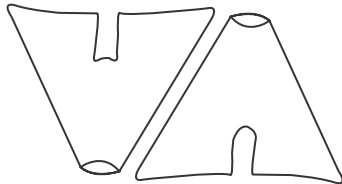
Contents



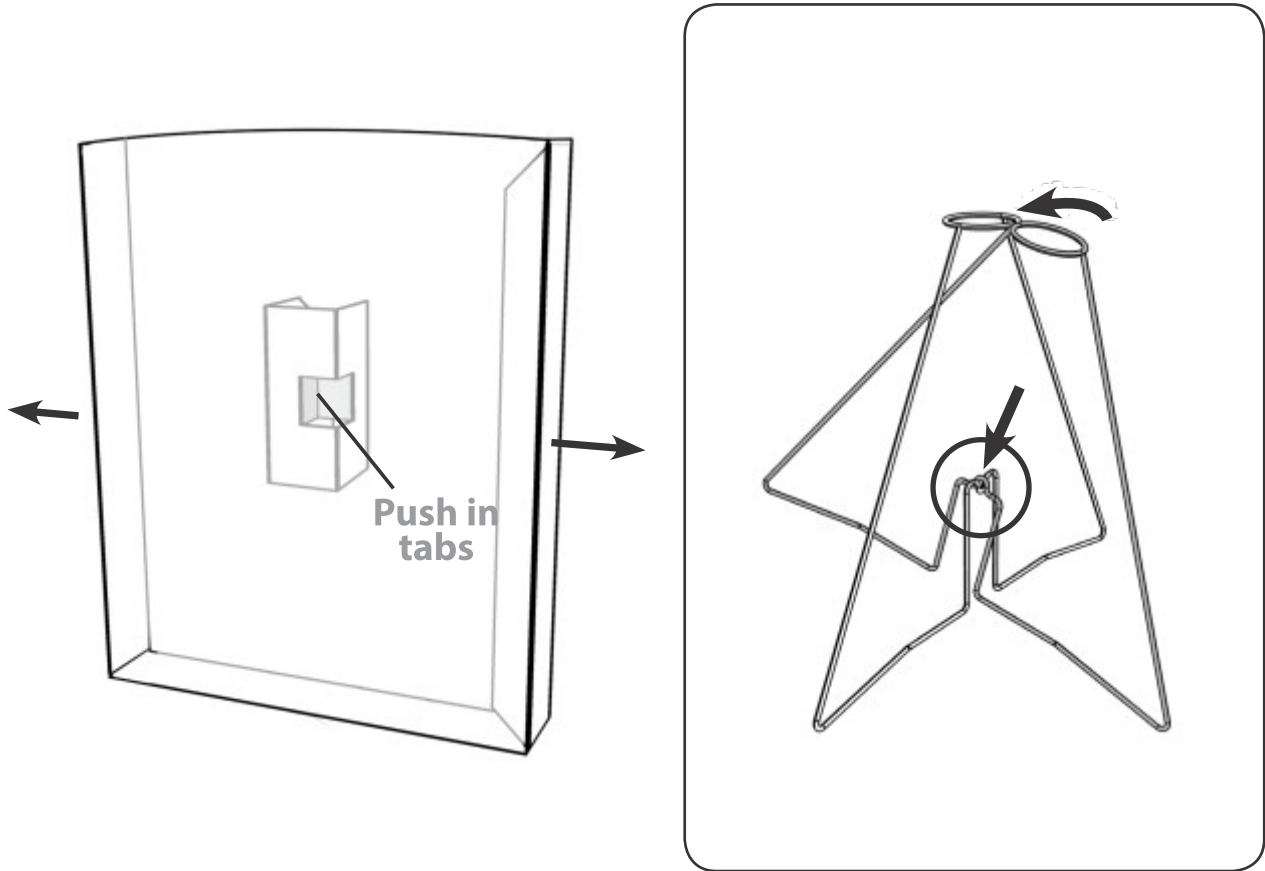
1 x set of
Cores



1 x Portrait Header

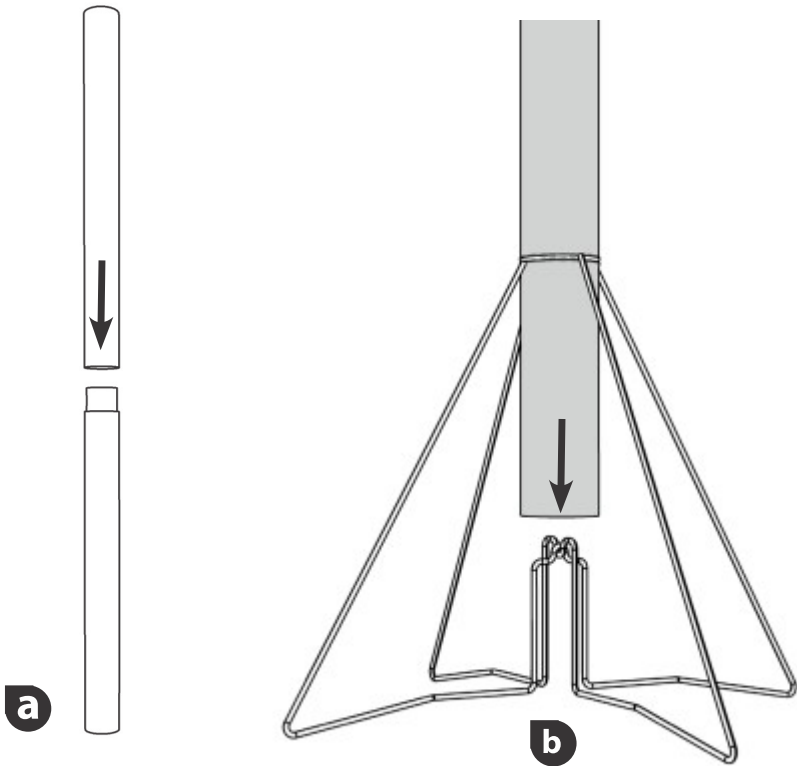


2 x Wire Base Supports

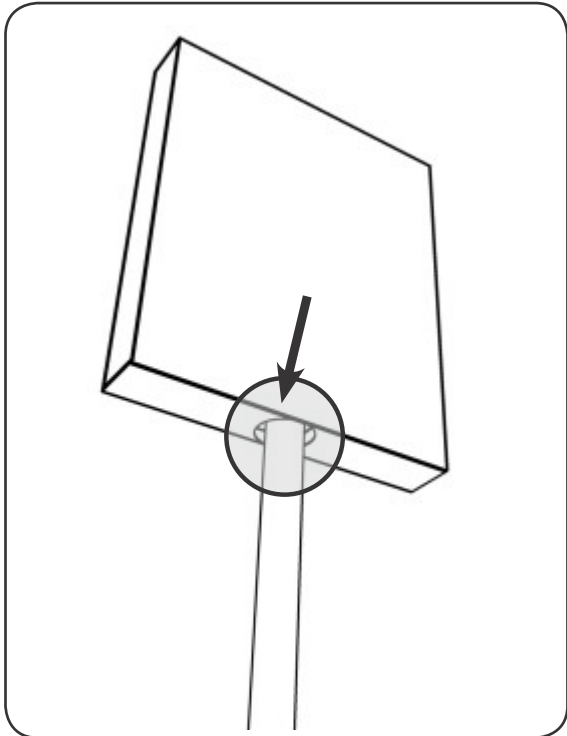


1 Expand header and push in tabs.

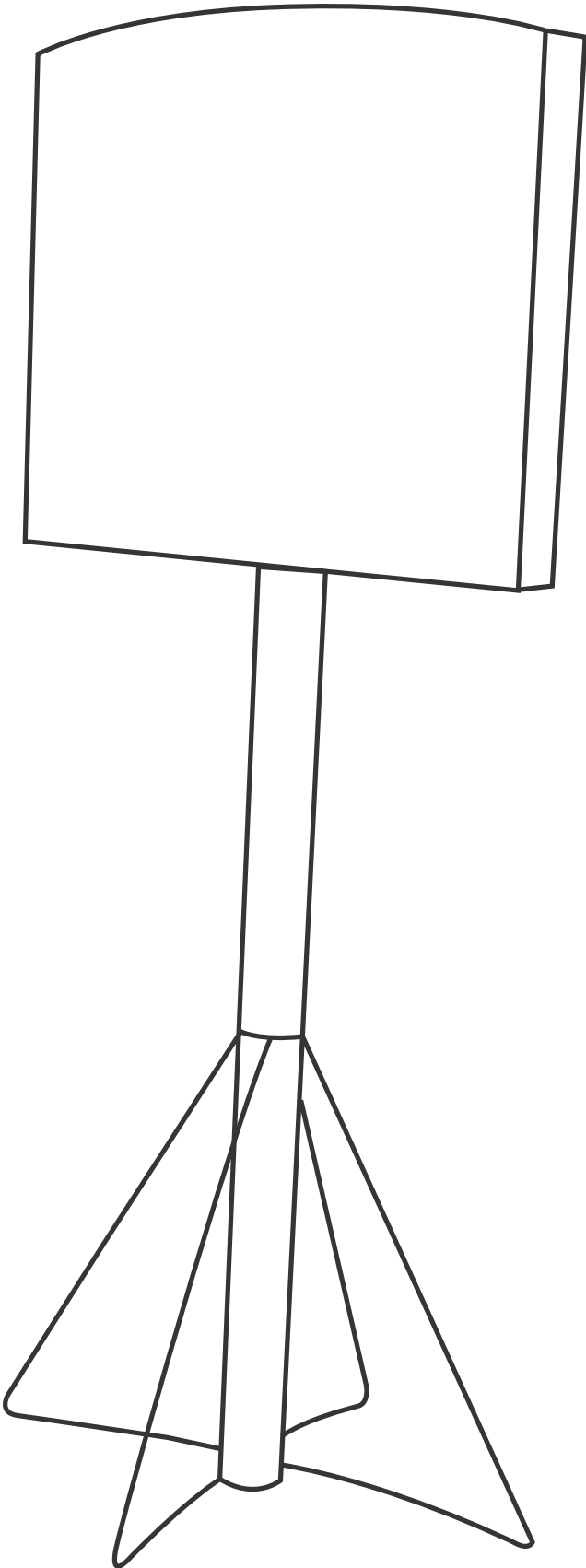
2 Assemble wire support as shown above.



3 a) Join cores together by inserting spigot of bottom core into the top.
b) Insert pole through top hole and onto bottom middle points.



4 Lower made up header onto core settling the header on the core.



5 The unit is now complete.