

# FSU STEPPED - ASSEMBLY INSTRUCTIONS

## Contents



4 x Plastic Pins

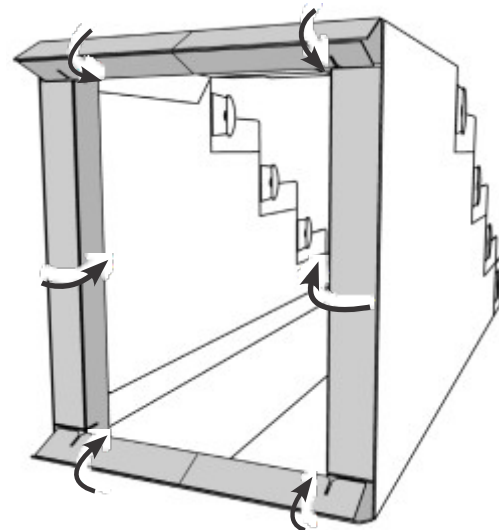
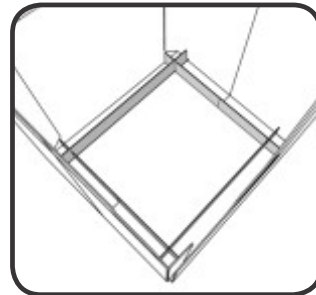
1 x Header

1 x Core

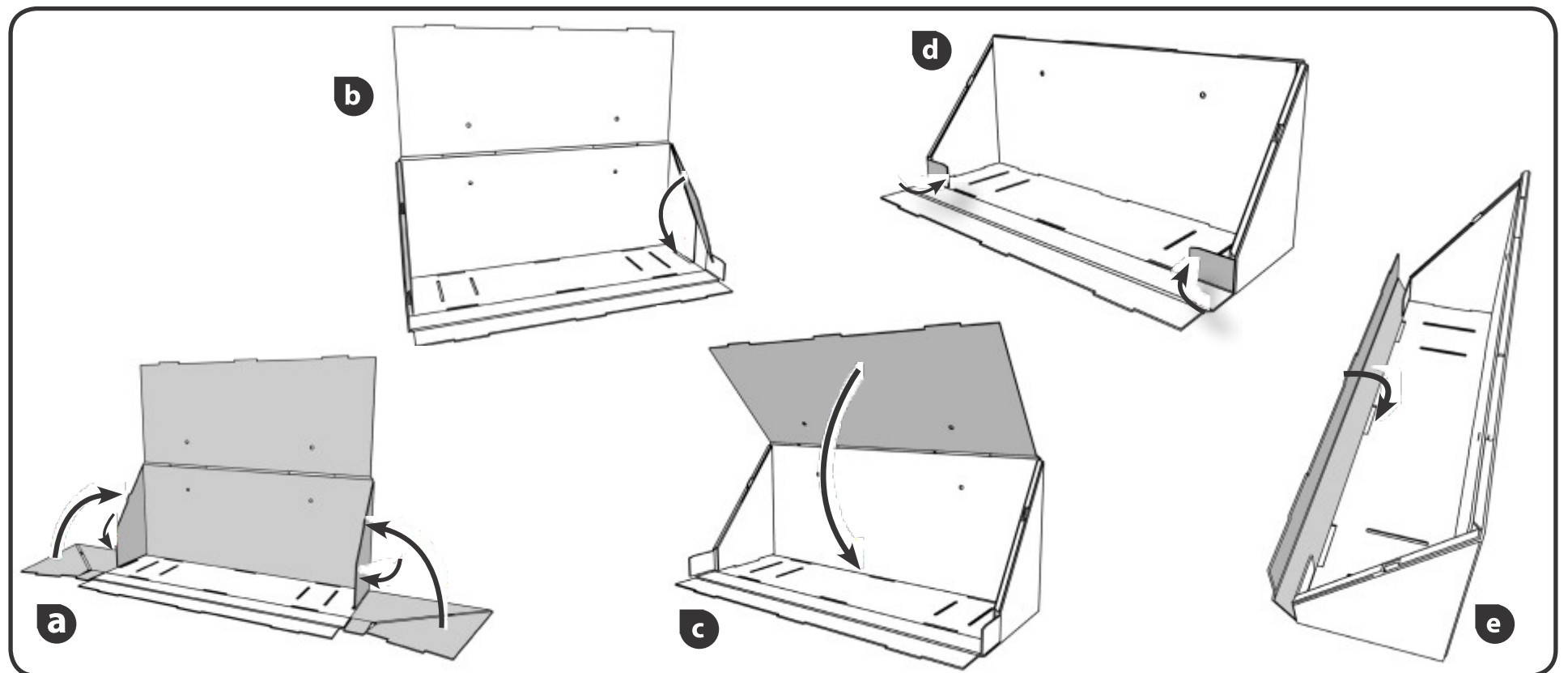
4 x Large Shelves

4 x Shelf Pads

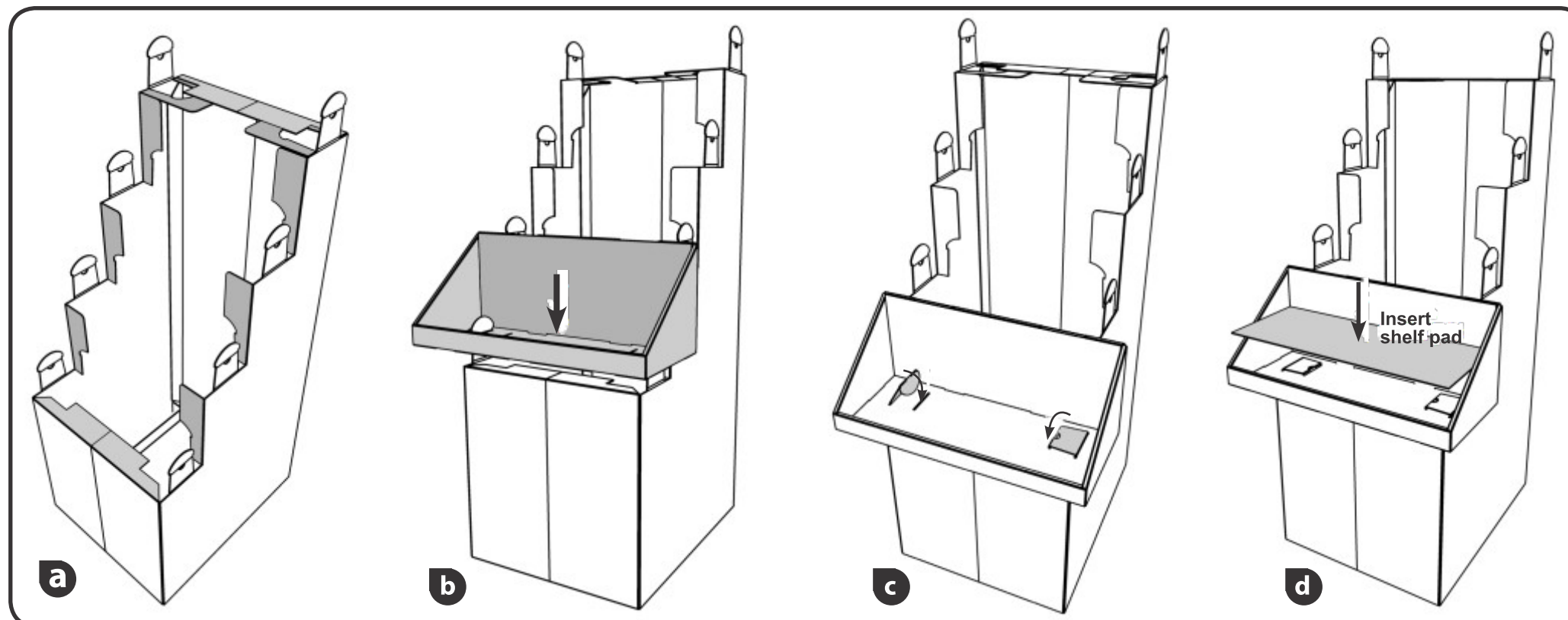
TOP VIEW



**1** Expand core unit and fold bottom flaps into each other as shown above to secure unit.



**2** Make up shelves by following steps a) - e).



**3** a) Attach shelves by locating onto bottom core step.  
b) Let tabs pass through slots on bottom on shelf.  
c) Insert tabs through inner slots to lock into place.  
d) Insert shelf pads.  
Repeat steps for all shelves.



**4** Attach header into slots on top shelf.  
The unit is now complete.