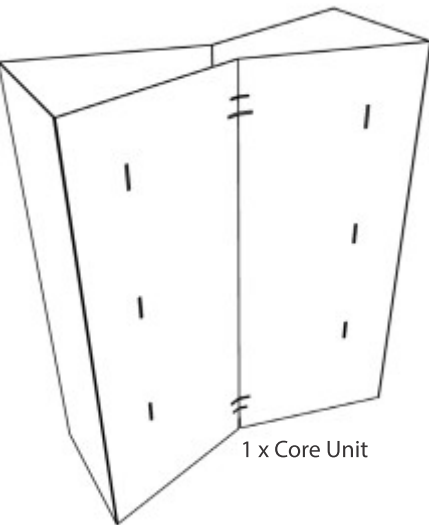


PROMO TABLE - ASSEMBLY INSTRUCTIONS

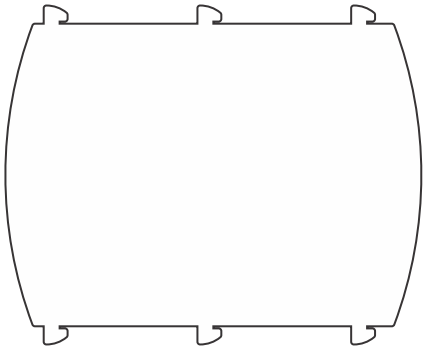
Contents



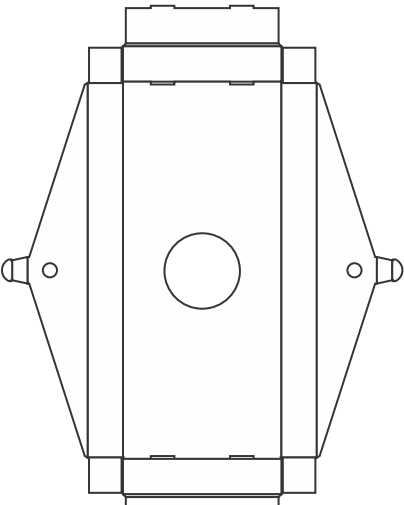
1 x Core Unit



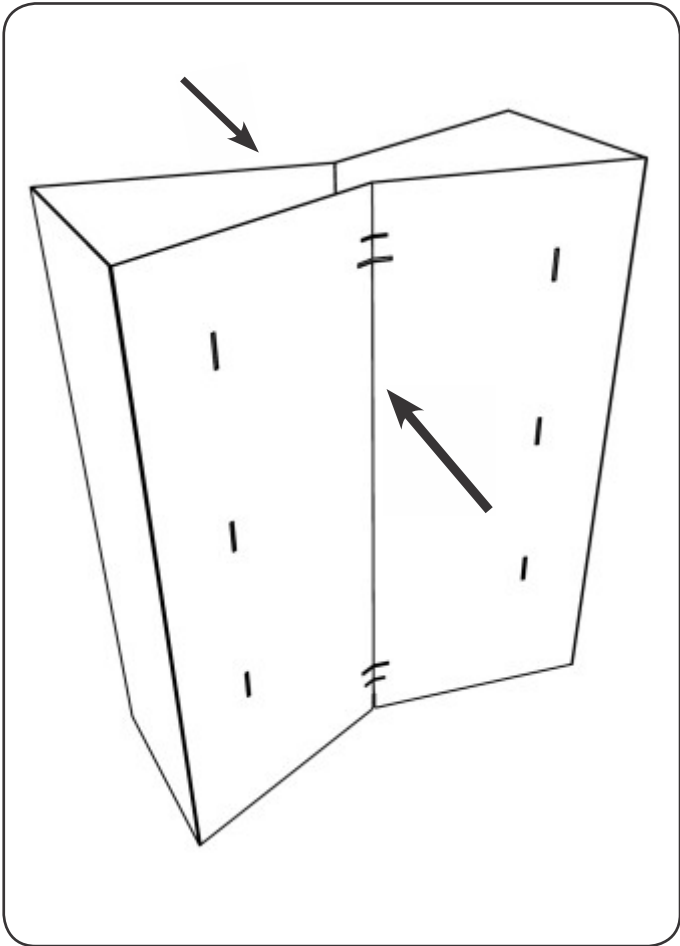
1 x Base Strut



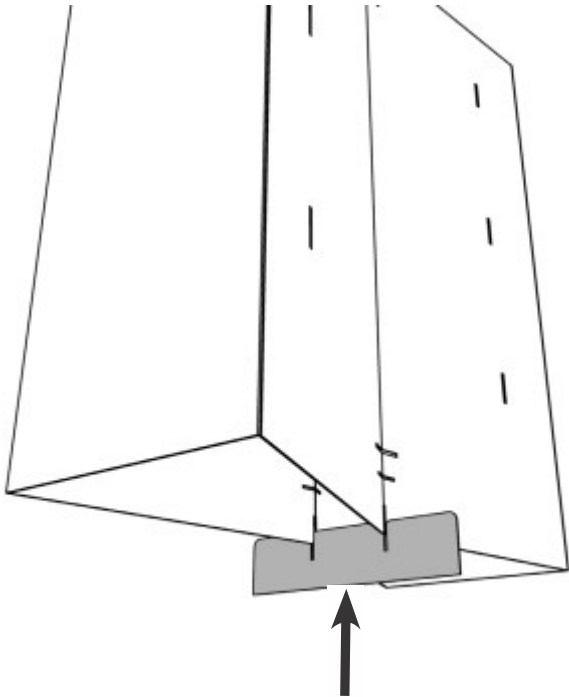
1 x Branding Panel



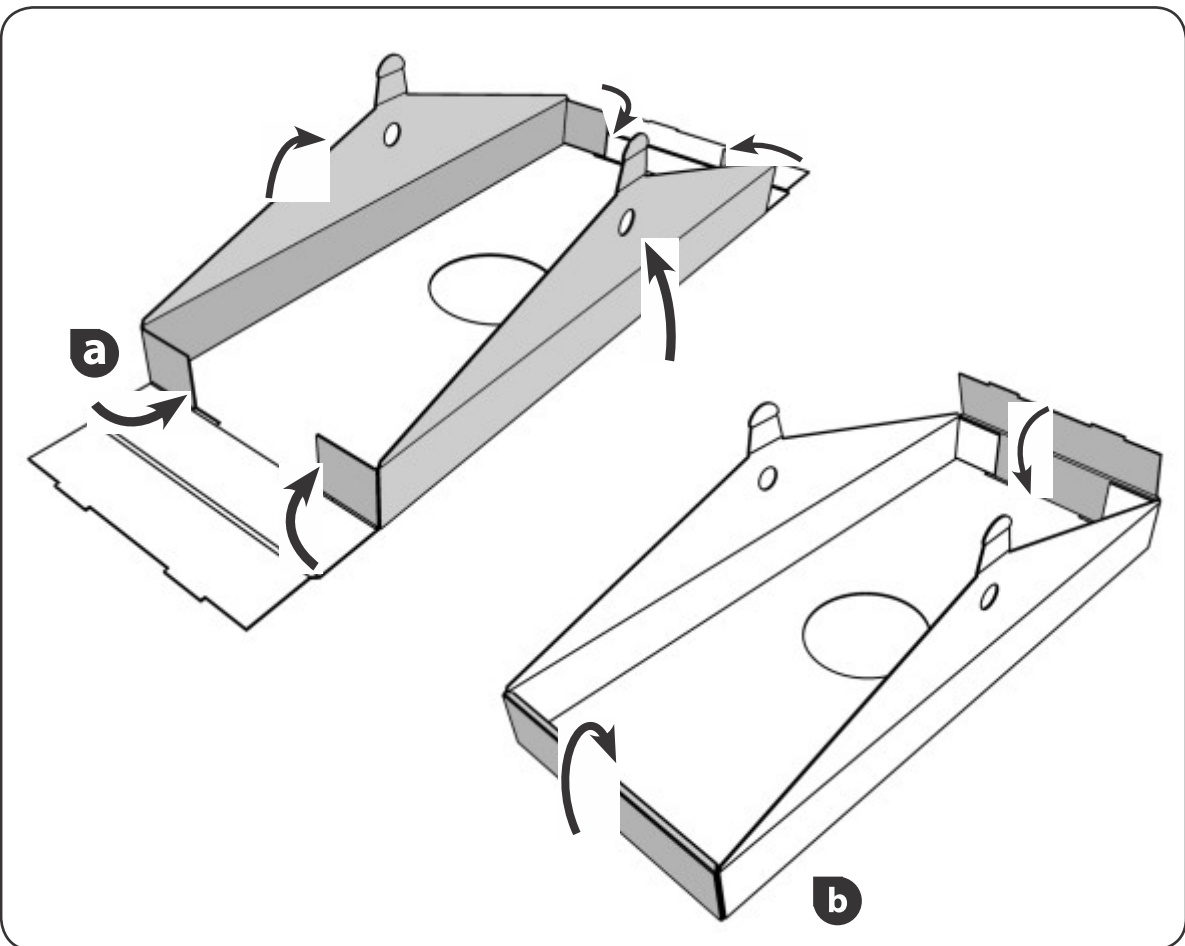
1 x Base & 1 x Lid



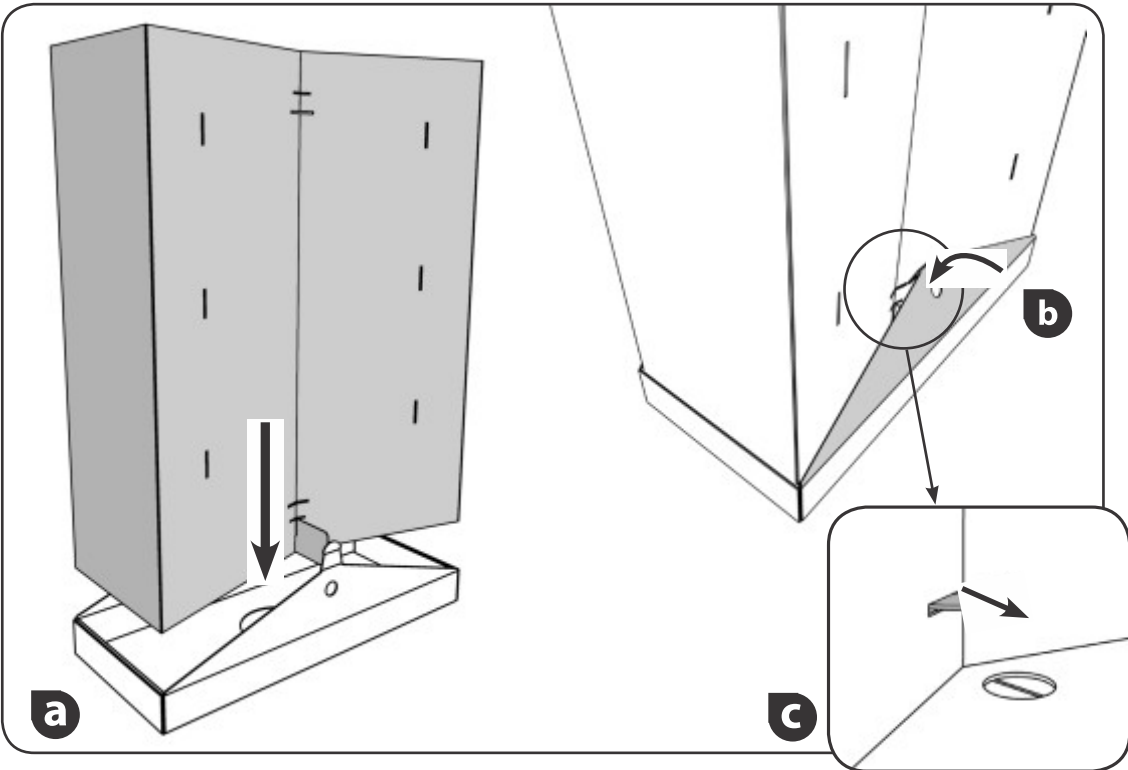
1 Expand core unit and push in the centre points to shape the core unit as shown above.



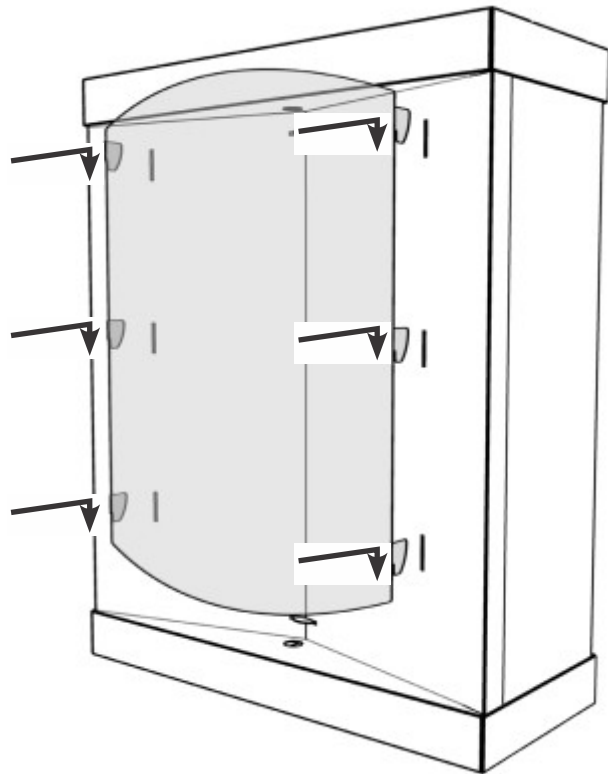
2 Push in base strut to secure the shape of the core unit.



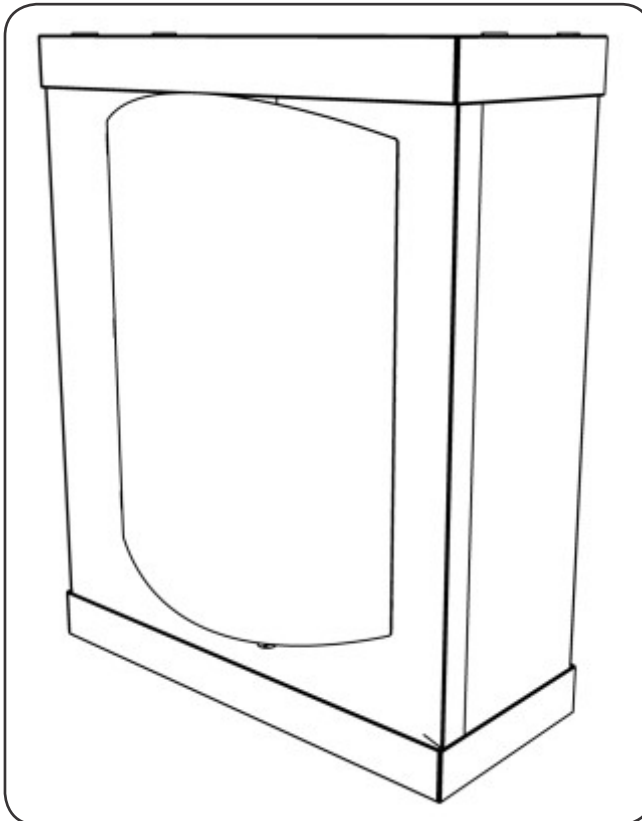
3 Make up the Base and Lid by following steps a) - b).



4 a) Lower the unit into the base as shown letting the core unit sit inside the base.
b) Fold the side panels with the lock tabs on both sides. Insert the lock tab into the bottom slot.
c) Push out the lock tab from the top slot.



5 Attach the branding panel to the front of the core unit by inserting the tabs into the slots on the front of the core unit and push down to secure.



6 The unit is now complete.