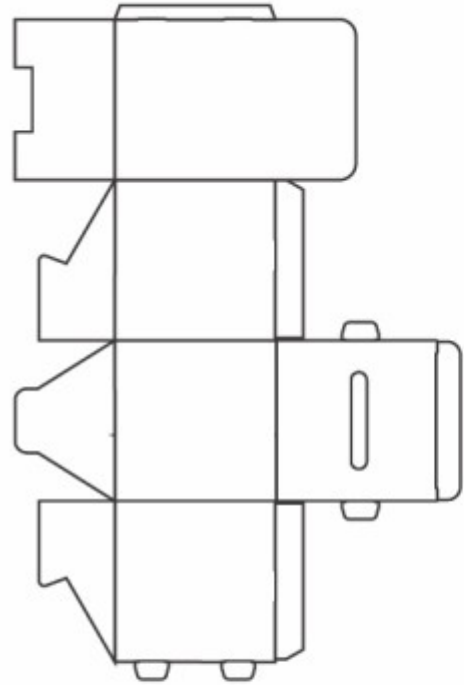
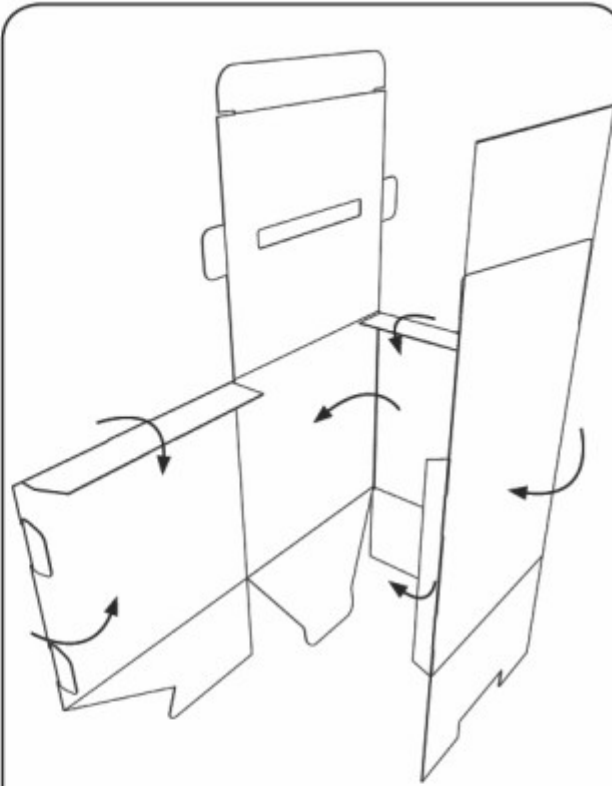


ENTRY FORM BOX - INSTRUCTIONS

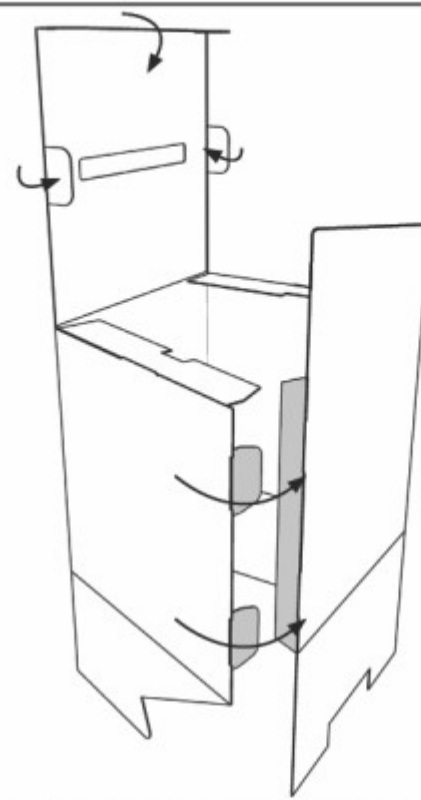
Contents



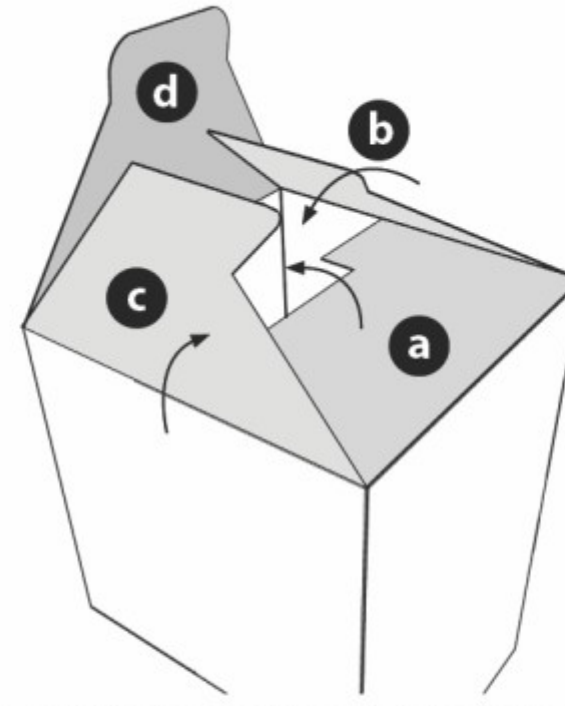
1 x Entry Form Box



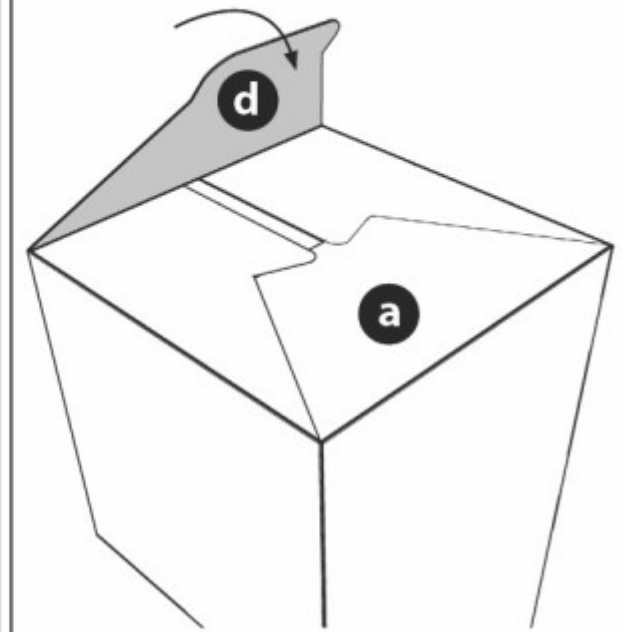
1 Crease and fold unit to resemble the above illustration.



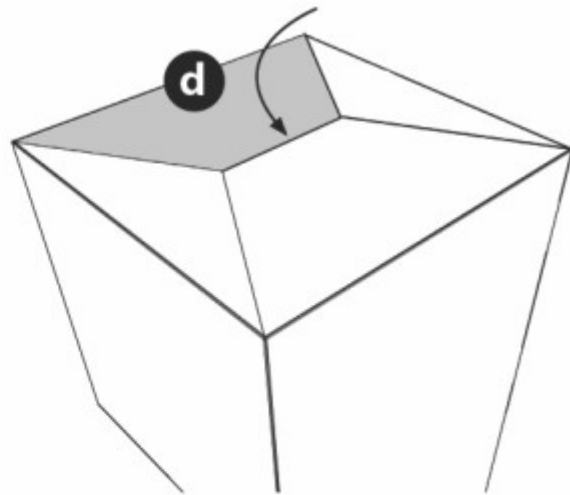
2 Fold side panel making sure to secure locking tabs as illustrated.



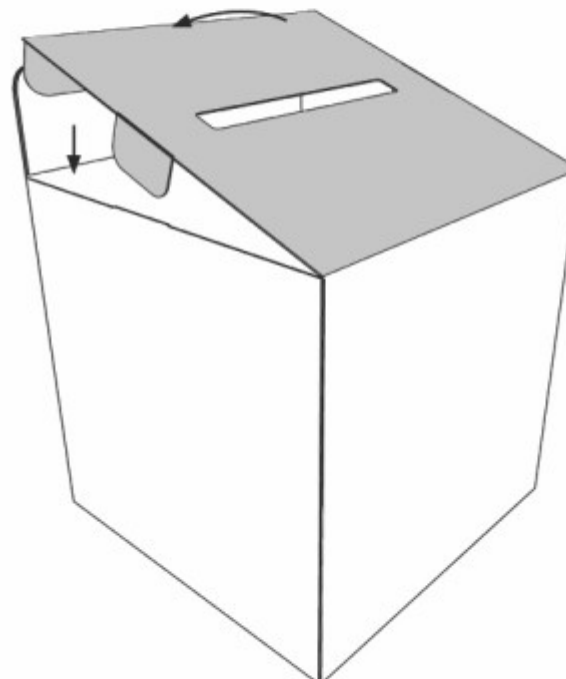
3 Fold bottom panels in as illustrated Starting first with panel A then followed by panel B & C



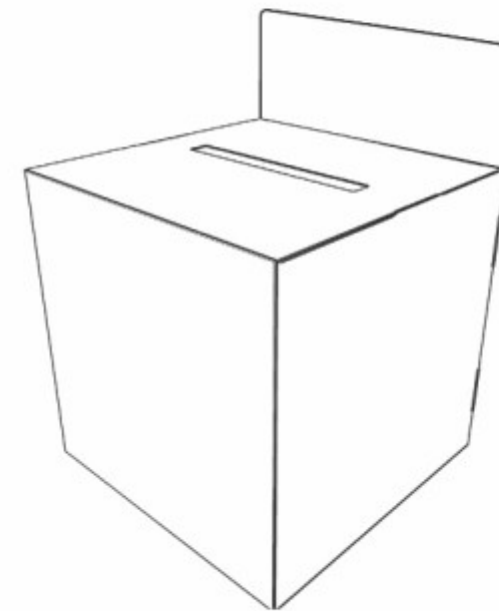
4 Fold bottom panels in as illustrated locking in panel D to A



5 Ensure that panel D is tucked under panel A.



6 Fold top panel making sure to secure locking tabs as illustrated.



7 Unit is now complete.